

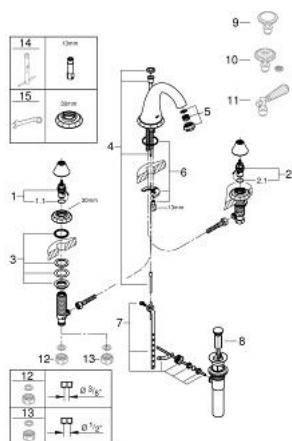
20 124 000 **KENSINGTON THREE-HOLE BASIN MIXER 1/2"**



**PRODUCT DESCRIPTION**

- Colour: chrome
- without handles
- mousseur
- side valves
- ceramic headparts 1/2", 90°
- pop-up waste set 1 1/4"
- pressure-proof flexible connection hoses between spout and side valves
- GROHE Long-Life finish
- round handles 18 086 000 & 18 086 EN0 (sold separately)
- Swarovski crystal handles 18 086 VP0 (sold separately)
- lever handles 18 087 000 & 18 087 EN0 (sold separately)

## 20 124 000 KENSINGTON THREE-HOLE BASIN MIXER 1/2"



### SPARE PARTS, marec 2016 – now

- 1: Ceramic headpart 1/2" (Spare part-nr. 45882000)
- 1.1: O-ring Ø 18.2 x Ø 1.7 (Spare part-nr. 0392400M)
- 2: Ceramic headpart 1/2" (Spare part-nr. 45883000)
- 2.1: O-ring Ø 18.2 x Ø 1.7 (Spare part-nr. 0392400M)
- 3: Counter screws M28 x 1.5 (Spare part-nr. 45025000)
- 4: Pop-up rod (Spare part-nr. 45875000)
- 5: Sistra (Spare part-nr. 13990000)
- 6: Shank mounting kit (Spare part-nr. 46249000)
- 7: Ball rod (Spare part-nr. 48332000)
- 8: Plug (Spare part-nr. 48331000)
- 9: Round handle (Spare part-nr. 18086000)\*
- 10: Round handle (Spare part-nr. 18086VP0)\*
- 11: Lever handle (Spare part-nr. 18087000)\*
- 12: Coupling nut 1/2" (Spare part-nr. 1290100M)\*
- 13: Coupling nut 1/2" x 14.5 mm (Spare part-nr. 1290200M)\*
- 14: Mounting wrench (Spare part-nr. 19017000)\*
- 15: Special spanner (Spare part-nr. 19377000)\*
- \* Optional accessories