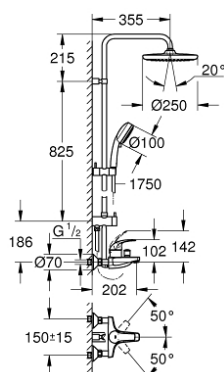


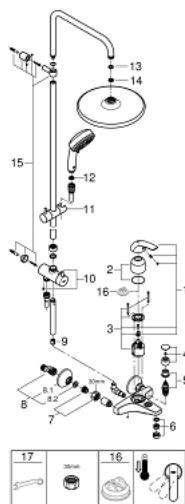
## 26 674 000 TEMPESTA COSMOPOLITAN SYSTEM 250 SHOWER SYSTEM WITH SINGLE LEVER BATH MIXER FOR WALL MOUNTING



### PRODUCT DESCRIPTION

- Colour: chrome
- with short shower rail for installation in showers
- consisting of:
  - horizontal 355 mm shower arm
  - exposed single-lever bath mixer with diverter handle
  - allows change between:
    - head shower Tempesta 250 (26 666)
    - spray pattern:
      - Rain
      - head shower with white rear cover
    - with ball joint
    - rotation angle  $\pm 10^\circ$
  - GROHE Water Saving 9.5 l/min flow limiter
  - bath inlet
  - separate diverter for hand shower
  - hand shower Tempesta Cosmopolitan 100 (27 575)
  - 4 spray patterns:
    - GROHE Rain O<sup>2</sup>, Rain, Massage, Jet
    - GROHE Water Saving 9.5 l/min flow limiter
    - adjustable in height with gliding element
  - Rotaflex TwistStop shower hose 1750 mm 1/2" x 1/2" (28 410)
  - GROHE Water Saving - Less water, perfect flow
  - GROHE SilkMove 46 mm ceramic cartridge
  - GROHE DreamSpray perfect spray pattern
  - GROHE Long-Life finish
  - SpeedClean anti-limescale system
  - Inner WaterGuide for a longer life
  - TwistStop to prevent hose from twisting
  - suitable for instantaneous heaters from 18 kW/h
  - minimum flow rate 7 l/min
  - min. recommended pressure 1.0 bar
  - professional edition

## 26 674 000 TEMPESTA COSMOPOLITAN SYSTEM 250 SHOWER SYSTEM WITH SINGLE LEVER BATH MIXER FOR WALL MOUNTING



### SPARE PARTS, februar 2019 – now

- 1: Lever (Spare part-nr. 46700000)
- 2: Cap (Spare part-nr. 46578000)
- 3: Cartridge (Spare part-nr. 46048000)
- 4: Diverter knob (Spare part-nr. 46571000)
- 5: Diverter (Spare part-nr. 08915000)
- 6: Mousseur (Spare part-nr. 13952000)
- 7: Screw connection 1/2" (Spare part-nr. 45044000)
- 8: S-union (Spare part-nr. 12075000)
- 8.1: Seal (Spare part-nr. 0138600M)
- 8.2: Escutcheon (Spare part-nr. 0221000M)
- 9: Non-return valve (Spare part-nr. 08565000)
- 10: Diverter (Spare part-nr. 46877000)
- 11: Glide element (Spare part-nr. 46876000)
- 12: Dirt strainer (Spare part-nr. 0700200M)
- 13: Fibre seal Ø 18,5 x Ø 12 x 2 (Spare part-nr. 0138900M)
- 14: Dirt strainer (Spare part-nr. 48007000)
- 15: Mounting set (Spare part-nr. 46878000)
- 16: Temperature limiter (Spare part-nr. 46375000)\*
- 17: Special spanner (Spare part-nr. 19377000)\*

\* Optional accessories