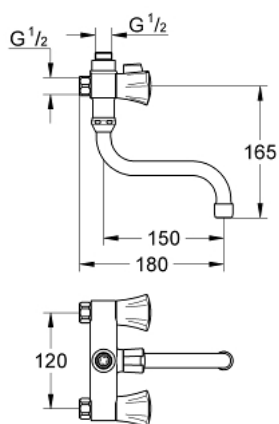


26 781 001 **COSTA L SOLID BASIN MIXER, 3/8"**

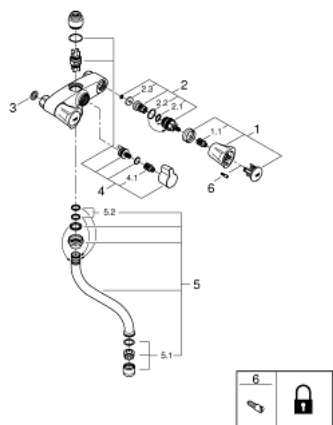


**PRODUCT DESCRIPTION**

- Colour: chrome
- wall mounted
- metal handles
- heat insulated
- screwable
- GROHE Long-Life headpart
- diverter
- S-outlet
- projection 150 mm
- without connection unions
- centre distance 120 mm
- GROHE Long-Life finish



## 26 781 001 **COSTA L SOLID BASIN MIXER, 3/8"**



### **SPARE PARTS**, junij 2007 – now

- 1: Handle (Spare part-nr. 45994000)
- 1.1: Snap insert (Spare part-nr. 0538600M)
- 2: Headpart 1/2" (Spare part-nr. 07146000)
- 2.1: Sealing washer Ø 6 x Ø 2 (Spare part-nr. 0128300M)
- 2.2: O-ring Ø 18.2 x Ø 1.7 (Spare part-nr. 0392400M)
- 2.3: Seal (Spare part-nr. 0529100M)
- 3: Fibre seal Ø 18,5 x Ø 12 x 2 (Spare part-nr. 0138900M)
- 4: Replacement kit for rotary valve (Spare part-nr. 48006000)
- 4.1: Snap insert (Spare part-nr. 0538600M)
- 5: S spout (Spare part-nr. 13005000)
- 5.1: Mousseur (Spare part-nr. 13928000)
- 5.2: Sealing washer (Spare part-nr. 0128500M)
- 6: Screw for Costa/Avina products (Spare part-nr. 48013000)\*

\* Optional accessories