

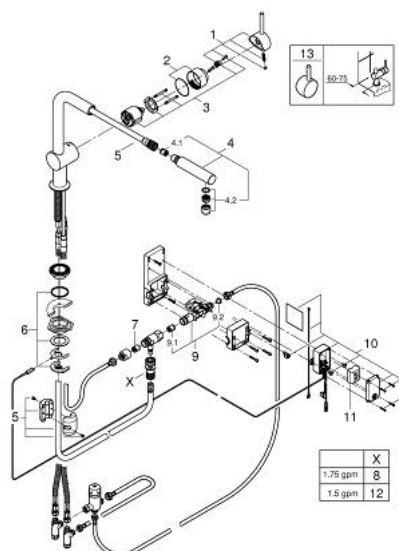
30 218 DC1 **MINTA TOUCH ELECTRONIC SINGLE-LEVER SINK MIXER 1/2"**



**PRODUCT DESCRIPTION**

- Colour: supersteel
- L-spout
- Touch: activation of water via skin contact
- battery supply 6 V lithium-battery, type CR-P2
- CE approved
- solenoid valve
- fixed value mixing valve
- automatic safety stop after 60 sec. (factory set)
- type of protection IP 44
- GROHE SilkMove 46 mm ceramic cartridge
- pull-out mousseur
- adjustable flow rate limiter
- swivel tubular spout
- swivel area 360°
- protected against backflow
- flexible connection hoses
- rapid installation system

## 30 218 DC1 MINTA TOUCH ELECTRONIC SINGLE-LEVER SINK MIXER 1/2"



### SPARE PARTS, maj 2015 – now

- 1: Lever (Spare part-nr. 46015DC0)
  - 2: Cap (Spare part-nr. 46025DC0)
  - 3: Cartridge (Spare part-nr. 46048000)
  - 4: Pull out spray (Spare part-nr. 46858DC0)
  - 4.1: Non-return valve (Spare part-nr. 08565000)
  - 4.2: Mousseur (Spare part-nr. 13967DC0)
  - 5: Hose for sink mixer with pull-out dual spray or mousseur (Spare part-nr. 48293000)
  - 6: Shank mounting kit (Spare part-nr. 46345000)
  - 7: Non-return valve (Spare part-nr. 08565000)
  - 8: Snap coupling (Spare part-nr. 48220000)
  - 9: Solenoid valve (Spare part-nr. 48213000)
  - 9.1: Non-return valve (Spare part-nr. 08565000)
  - 9.2: Dirt strainer (Spare part-nr. 42395000)
  - 10: Control unit (Spare part-nr. 48214000)
  - 11: Battery (Spare part-nr. 42886000)
  - 12: Quick coupling (Spare part-nr. 64999000)\*
- \* Optional accessories