

## 31 593 DC2 ZEDRA SMARTCONTROL SINK MIXER WITH SMARTCONTROL

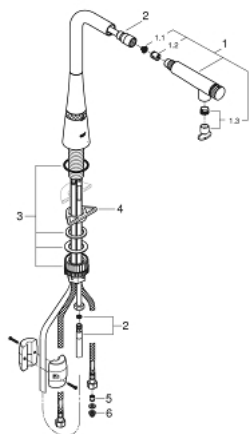


### PRODUCT DESCRIPTION

- Colour: supersteel
- single hole installation
- GROHE Long-Life finish
- pull-out spray with laminar
- metal spray
- GROHE Magnetic Docking guarantees easy retraction and smooth docking of the spray head back to the starting position
- GROHE SmartControl push for ON-OFF, turn for volume adjustment from water saving eco mode to Full Flow
- temperature adjustment by turning of mixing valve on body
- swivel tubular spout
- swivel area 140°
- protected against backflow
- flexible connection hoses
- 
- Lead and Nickel Free Inner Water Ways
- maximum flow rate (at 3 bar): 10 l/min



## 31 593 DC2 ZEDRA SMARTCONTROL SINK MIXER WITH SMARTCONTROL



### SPARE PARTS, julij 2018 – now

- 1: Pull out spray (Spare part-nr. 48487DC0)
- 1.1: Dirt strainer (Spare part-nr. 0676800M)
- 1.2: Non-return valve (Spare part-nr. 08565000)
- 1.3: Flow control set (Spare part-nr. 48470000)
- 2: Shower hose (Spare part-nr. 48488000)
- 3: Mounting set (Spare part-nr. 48477000)
- 4: Support plate (Spare part-nr. 05334000)
- 5: Non-return valve (Spare part-nr. 45881000)
- 6: Dirt strainer (Spare part-nr. 0676800M)