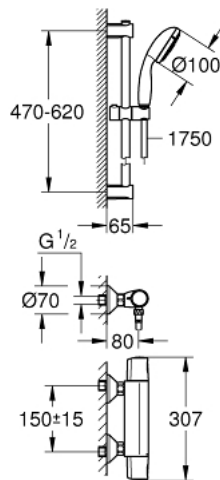


34 237 002 PRECISION TREND THERMOSTATIC SHOWER SET 1/2"

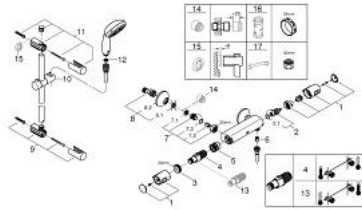


PRODUCT DESCRIPTION

- Colour: chrome
- consisting of:
 - Precision Trend thermostatic shower mixer (34 229)
 - Vitalio Start 100 shower set, 3 sprays, 600 mm (26 032 000)
 - GROHE EcoJoy - Less water, perfect flow
 - Inner WaterGuide - inner insulation for surface protection
 - GROHE DreamSpray - perfect spray pattern
 - GROHE LongLife finish
 - GROHE SpeedClean - effortless limescale removal
 - ShockProof silicone ring prevents damages caused by shower falling
 - suitable for screwing (including screws and dowels) or gluing (GROHE QuickGlue S 41 247 000 sold separately - 2 x needed)
 - holding force: max. 20 kg
 - the specified holding capacity is valid for static (slowly applied) load and intended use only



34 237 002 PRECISION TREND THERMOSTATIC SHOWER SET 1/2"



SPARE PARTS, september 2014 – now

- 1: Handle (Spare part-nr. 47992000)
- 2: Ceramic headpart 1/2" (Spare part-nr. 45346000)
- 2.1: O-ring \varnothing 18.2 x \varnothing 1.7 (Spare part-nr. 0392400M)
- 3: Fitting ring (Spare part-nr. 47743000)
- 4: Thermostatic compact cartridge 1/2" (Spare part-nr. 47439000)
- 5: Race (Spare part-nr. 47975000)
- 6: Non-return valve (Spare part-nr. 08565000)
- 7: Non-return valve (Spare part-nr. 47189000)
- 7.1: Dirt strainer (Spare part-nr. 0726400M)
- 7.2: Non-return valve (Spare part-nr. 08565000)
- 7.3: O-ring \varnothing 17 x \varnothing 2 (Spare part-nr. 0305500M)
- 8: S-union (Spare part-nr. 12075000)
- 8.1: Seal (Spare part-nr. 0138600M)
- 8.2: Escutcheon (Spare part-nr. 0221000M)
- 9: Shower rail holder (Spare part-nr. 48095000)
- 10: Glide element (Spare part-nr. 12140000)
- 11: Shower rail holder (Spare part-nr. 48097000)
- 12: Dirt strainer (Spare part-nr. 0700200M)
- 13: GROHE TurboStat cartridge 1/2" (Spare part-nr. 47175000)*
- 14: Extension 3/4", 20 mm (Spare part-nr. 0713000M)*
- 15: Compensation disc (Spare part-nr. 48051000)*
- 16: Socket spanner (Spare part-nr. 19332000)*
- 17: Special spanner (Spare part-nr. 19377000)*

* Optional accessories