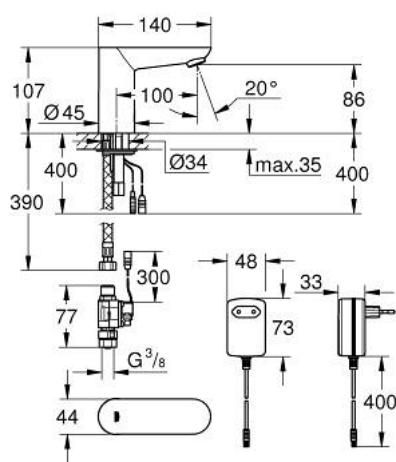


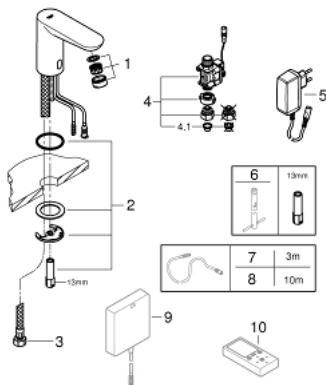
36 269 000 EUROECO COSMOPOLITAN E INFRA-RED ELECTRONIC BASIN TAP 1/2" WITHOUT MIXING DEVICE



PRODUCT DESCRIPTION

- Colour: chrome
- with infrared sensor for bi-directional communication for monitoring, configuration and servicing
- for cold or premixed water
- with plug transformer 100-230 V AC, 50-60 Hz, 6 V DC
- GROHE Water Saving - Less water, perfect flow
- maximum flow rate (at 3 bar): 5 l/min
- flexible connection hoses
- dirt strainers
- external solenoid valve
- rapid installation system
- 7 pre-set programs:
 - auto flush
 - thermal disinfection
 - cleaning mode
- additional functions and precise settings by remote control 36 407
- CE approved
- noise classification I in accordance with DIN 4109
- type of protection faucet IP 59K
- min. recommended pressure 1.0 bar

36 269 000 EUROECO COSMOPOLITAN E INFRA-RED ELECTRONIC BASIN TAP 1/2" WITHOUT MIXING DEVICE



SPARE PARTS, september 2015 – now

- 1: Mousseur (Spare part-nr. 48159000)
- 2: Shank mounting kit (Spare part-nr. 42389000)
- 3: Connection hose (Spare part-nr. 46255000)
- 4: Solenoid valve (Spare part-nr. 42390000)
- 4.1: Dirt strainer (Spare part-nr. 42395000)
- 5: Mains adaptor (Spare part-nr. 42388000)
- 6: Mounting wrench (Spare part-nr. 19017000)*
- 7: Power extension cable (Spare part-nr. 36340000)*
- 8: Power extension cable (Spare part-nr. 36341000)*
- 9: Switch-mode power supply (Spare part-nr. 36338000)*
- 10: Remote control (Spare part-nr. 36407001)*

* Optional accessories