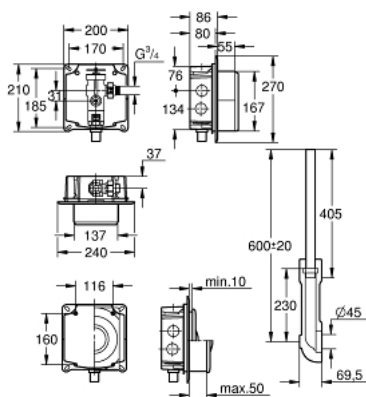


37 153 000 **FLUSH VALVE FOR WC**

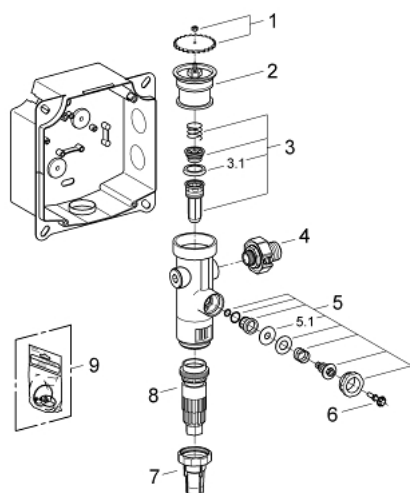


## PRODUCT DESCRIPTION

- Colour: chrome
- concealed installation
- 3/4"
- stop valve
- 6 - 9 l adjustable
- flow pressure range from 1.2 - 5.0 bar
- with flow rate adjustment
- box for concealed installation with flush elbow
- flush pipe adjustable in length
- without flush plate/actuation
- low noise (group I acc. to German Noise Specification)



## 37 153 000 FLUSH VALVE FOR WC



### SPARE PARTS, julij 2008 – now

- 1: Hand wheel (Spare part-nr. 43043000)
- 2: Cover (Spare part-nr. 43122000)
- 3: Piston (Spare part-nr. 43451000)
- 3.1: Sleeve (Spare part-nr. 4376900M)
- 4: Supply stop (Spare part-nr. 43405000)
- 5: Safety valve (Spare part-nr. 43422000)
- 5.1: Membrane (Spare part-nr. 4377300M)
- 6: Operating rod (Spare part-nr. 43067000)
- 7: Discharge sleeve (Spare part-nr. 43326000)
- 8: Throttle nozzle (Spare part-nr. 43407000)
- 9: Set of seals (Spare part-nr. 43012000)\*

\* Optional accessories