

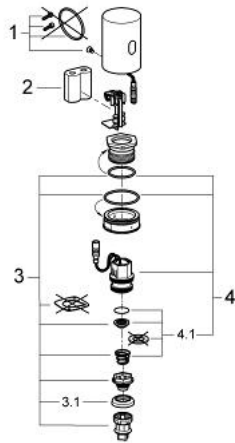
37 428 000 TECTRON RETROFIT UNIT 1/2"



PRODUCT DESCRIPTION

- Colour: chrome
- with infrared sensor for bi-directional communication for monitoring, configuration and servicing
- 6 V lithium battery, type CR-P2
- battery lifetime: approx. 7 years (150 actuations a day)
- metal housing
- exposed installation
- for urinal flush valve 37 339 000 and variants
- flow pressure min 0.5 bar
- operating pressure max 10 bar
- with piston
- multistage battery status display
- 7 pre-set programs:
 - auto flush
 - cleaning mode
 - pre-flush on/off
- additional functions and precise settings by remote control 36 407
- adjustable flow time by hand or remote
- CE approved

37 428 000 TECTRON RETROFIT UNIT 1/2"



SPARE PARTS, januar 2013 – now

- 1: Set of screws (Spare part-nr. 42422000)
- 2: Battery (Spare part-nr. 42886000)
- 3: Piston (Spare part-nr. 42797000)
- 3.1: Sleeve (Spare part-nr. 4376500M)
- 4: Solenoid valve (Spare part-nr. 42438000)
- 4.1: Transformer for mirror (Spare part-nr. 43581000)