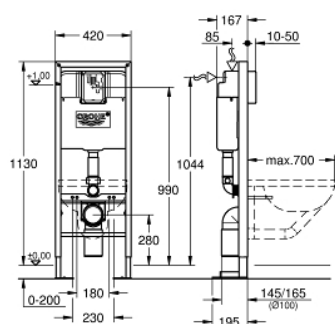


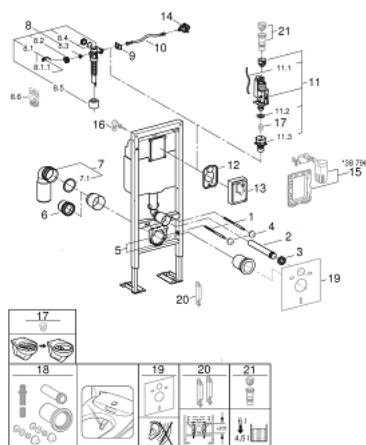
## 38 599 001 **RAPID SL ELEMENT FOR WC, 1.13 M INSTALLATION HEIGHT, 0.42 M WIDTH**

### PRODUCT DESCRIPTION

- with flushing cistern 6 l
- for installation in front of studded walls or free-standing installation
- powder coated steel frame, self-supporting
- for dry-cladding, completely pre-assembled
- height adjustable fitting connections
- fixing material
- TÜV approved
- 2 WC fixing bolts
- fixing device for ceramic
- distance of fixing bolts 180/230 mm
- PVC outlet bend 100 mm
- inlet and outlet connecting set
- pneumatic discharge valve offering 3 modes of operation: dual flush or start/stop or single flush
- low noise (group I acc. to German Noise Specification)
- insulated against condensation
- 1/2" water supply connection including integrated angle valve and push fit flexible hose union
- for on-the-wall installation please order wall brackets 38 558 00M (sold separately)



## 38 599 001 **RAPID SL ELEMENT FOR WC, 1.13 M INSTALLATION HEIGHT, 0.42 M WIDTH**



### SPARE PARTS, november 2021 – now

- 1: Threaded bolt (Spare part-nr. 4276400M)
- 2: Wall union (Spare part-nr. 43352000)
- 3: Connector (Spare part-nr. 37119000)
- 4: Basin fastening (Spare part-nr. 43511SH0)
- 5: Support for outlet bend (Spare part-nr. 42243000)
- 6: Distance pipe 3" (Spare part-nr. 42766000)
- 7: PVC waste bend (Spare part-nr. 42216000)
- 7.1: Sealing washer (Spare part-nr. 4207700M)
- 8: Filling valve (Spare part-nr. 43537000)
- 8.1: Dummy plug and escutcheon cap (Spare part-nr. 37125000)
- 8.2: Lever (Spare part-nr. 43734000)
- 8.2.1: Seal (Spare part-nr. 4377000M)
- 8.3: Valve head (Spare part-nr. 43536000)
- 8.4: Membrane (Spare part-nr. 4375800M)
- 8.5: Screw cap (Spare part-nr. 43735000)
- 8.6: Valve float, 5 pcs. (Spare part-nr. 4379100M)
- 8.7: Throttle (Spare part-nr. 42356000)
- 8.8: Set of seals (Spare part-nr. 43722000)\*
- 9: Support device (Spare part-nr. 43551000)
- 10: Hose (Spare part-nr. 43349000)
- 11: Dual Flush discharge valve AV1 (Spare part-nr. 66558000)
- 11.1: Pneumatic hose (Spare part-nr. 42319000)
- 11.2: Seal (Spare part-nr. 42310000)
- 11.3: Valve seat for GD2 (Spare part-nr. 42315000)
- 12: Protective plate (Spare part-nr. 43552000)
- 13: Protection cap (Spare part-nr. 43944000)
- 14: Water connection (Spare part-nr. 48561000)
- 15: Retrofit set (Spare part-nr. 38796000)\*
- 16: Wall brackets (Spare part-nr. 3855800M)\*
- 17: Flow restrictor (Spare part-nr. 42300000)\*
- 18: Retrofit kit for shower toilets Sensia Arena and IGS (Spare part-nr. 40899000)\*
- 19: Set for noise protection (Spare part-nr. 37131000)\*
- 20: Accessory (Spare part-nr. 38779000)\*
- 21: 4.5 l adapter for GD2 (Spare part-nr. 42333000)\*

\* Optional accessories