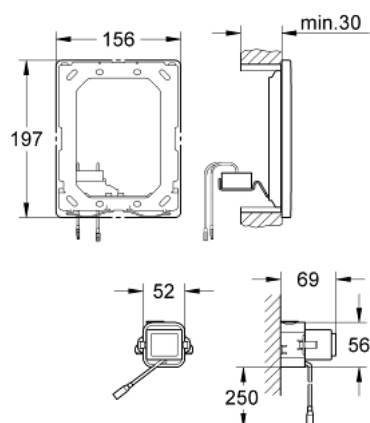


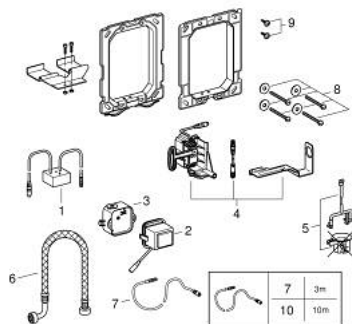
38 778 000 **RADIO ELECTRONIC**



PRODUCT DESCRIPTION

- for an additional flush plate for manual actuation
- for WC
- receiver modul 868,4 MHz
- for support rails for the disabled with radio transmitter of Hewi, Keuco, Lehnert, Normbau, Pressalit, Deubad, RUD, Emco, FRELU, FSB, Delabie, PSA, EWAR (Wagner Ewar), TECE, RehaGrip, Sam, Hergert, Fa. Provex
- for flushing cistern GD 2
- for flushing cistern 6 l
- concealed installation
- servo motor
- with transformer 100-230 V AC, 50-60 Hz, 6 V DC
- adjustable flush volume
- adjustable flow time
- 72 h flushing can be activated
- with extension cable, 3.00 m length, for connecting transformer and electronic

38 778 000 **RADIO ELECTRONIC**



SPARE PARTS, maj 2023 – now

- 1: Wireless receiver (Spare part-nr. 42336000)
- 2: Transformer (Spare part-nr. 42278000)
- 3: Transformer connecting box (Spare part-nr. 42279000)
- 4: Servo motor (Spare part-nr. 42612000)
- 5: Pop-up rod for servo motor (Spare part-nr. 43306000)
- 6: Hose (Spare part-nr. 43307000)
- 7: Extension cable (Spare part-nr. 36221000)
- 8: Fixing set (Spare part-nr. 4308500M)
- 9: Screw (Spare part-nr. 6636200M)
- 10: Extension cable (Spare part-nr. 36222000)*

* Optional accessories