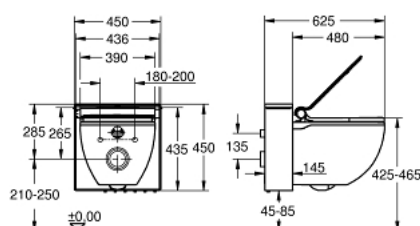


39 111 LP0 GROHE SENSIA IGS SHOWER TOILET COMPLETE SYSTEM FOR CONCEALED FLUSHING CISTERNS, WALL-HUNG



PRODUCT DESCRIPTION (1/2)

- Colour: alpine white/alpine white
- GROHE Hygiene decalcification program, unique 70°C hot water cleaning for entire water system, automatic shower cleaning before and after every use
- GROHE DreamSpray technology:
- separate water way for lady spray
- aerated shower spray
- oscillating spray (automatic forward and reverse motion of the spray)
- pulsating spray for massage
- adjustable spray intensity
- automatic pre- and post-rinsing of spray nozzle with fresh water
- warm water with adjustable temperature
- Additional functions:
- warm air dryer with adjustable temperature
- odor extraction with filter
- Duroplast WC seat and lid with soft close function
- push and turn seat control operation
- 4 programmable user profiles for remote controller
- power switch
- inside night lighting
- hidden water supply and power supply connections
- includes:
- touchscreen remote control with wall-mounted holder
- batteries for remote controller
- active carbon filter
- fixing and connecting material
- flush pipe
- cable with system plug on device
- installation guide, manual
- pressure 0.1 - 1.0 MPa (1 - 10 bar)
- nominal voltage 220-240 V AC 1400 W
- main frequency 50-60 Hz
- type of protection IPX4

Pure Freude
an Wasser



39 111 LP0 GROHE SENSIA IGS SHOWER TOILET COMPLETE SYSTEM FOR CONCEALED FLUSHING CISTERNS, WALL-HUNG

PRODUCT DESCRIPTION (2/2)

- complying with EN 1717/13077
- CE approved
- LP0: alpine white ceramic, front, seat and lid matt chrome housing

39 111 LP0 GROHE SENSIA IGS SHOWER TOILET COMPLETE SYSTEM FOR CONCEALED FLUSHING CISTERNS, WALL-HUNG



SPARE PARTS, august 2018 – now

- 1: WC seat and lid (Spare part-nr. 14913000)
- 2: Splash protection (Spare part-nr. 14914000)
- 3: Operating unit (Spare part-nr. 14916000)
- 4: WC-ceramic (Spare part-nr. 14900000)
- 5: Remote control (Spare part-nr. 14915000)
- 6: Shower unit (Spare part-nr. 14904000)
- 7: Interface print (Spare part-nr. 14908000)
- 8: Dryer (Spare part-nr. 14905000)
- 9: Flush device (Spare part-nr. 14910000)
- 10: Boiler (Spare part-nr. 14902000)
- 11: Odour extraction (Spare part-nr. 14909000)
- 12: Connecting pipe (Spare part-nr. 14917000)
- 13: LED-print (Spare part-nr. 14907000)
- 14: Electronic (Spare part-nr. 14906000)
- 15: Pump (Spare part-nr. 14903000)
- 16: Panel set (Spare part-nr. 14911LP0)
- 17: Spray (Spare part-nr. 14912000)