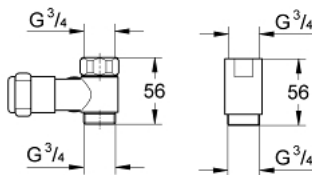
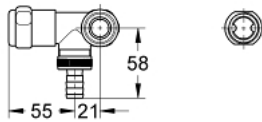


41 040 000 **ORIGINAL WAS® VALVE "MIXER" 3/4"**

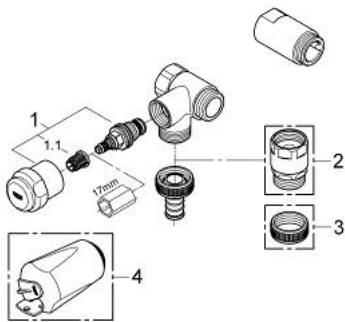


PRODUCT DESCRIPTION

- Colour: chrome
- wall mounted
- for wall mixers 1/2"
- left-hand connection
- grease chamber headpart 1/2" for closable hose connection
- non-return valve type EB
- spacer
- protected against backflow
- GROHE Long-Life finish
- for combination with pipe ventilating valve type HB 41 239 000



41 040 000 **ORIGINAL WAS® VALVE "MIXER" 3/4"**



SPARE PARTS, junij 2006 – now

1: Headpart 1/2" (Spare part-nr. 41818000)

1.1: Snap insert (Spare part-nr. 4184200M)

2: Pipe-ventilating valve 3/4" (Spare part-nr. 41239000)*

3: Cap 3/4" (Spare part-nr. 41826000)*

4: Handle (Spare part-nr. 41000000)*

* Optional accessories